

Rabbit Anti PEG Antibody[Biotin], pAb

Cat.No: DTA0713

DESCRIPTION

Name	Rabbit Anti PEG Antibody[Biotin], pAb
Immunogen	Polyethylene glycol conjugated to keyhole limpet haemocyanin(KLH)
Host Species	Rabbit
Specificity	This antibody recognizes PEG40K,PEG20K,PEG5K,PEG12,PEG4,PEG2 and PEG conjugates.
Form	Liquid
Concentration	0.5 mg/ml
Storage Buffer	1×PBS, pH7.4, containing 0.05% BSA, 50% glycerol and 0.03% Proclin 300.
Conjugate	Biotin
Clonality	Polyclonal
Isotype	Rabbit IgG
Shipping and Storage	Shipped in ice bag. The antibody can be stored for 1-2 weeks at 2-8 °C. For long term storage, store it at -20 °C. Avoid repeated freezing and thawing cycles.
Expiration Date	Specified on product label.
Note	Some reagents with structures similar to PEG, such as Tween-20, Triton X-100, and NP-40 can affect the detection of PEG antibody. The detection system cannot contain such reagents.

Applications

Application	Recommended Usage
ELISA	0.1-1μg/ml
Western Blot	0.1-1μg/ml
Other applications	User-optimized

Examples

Indirect ELISA analysis of variety of PEG

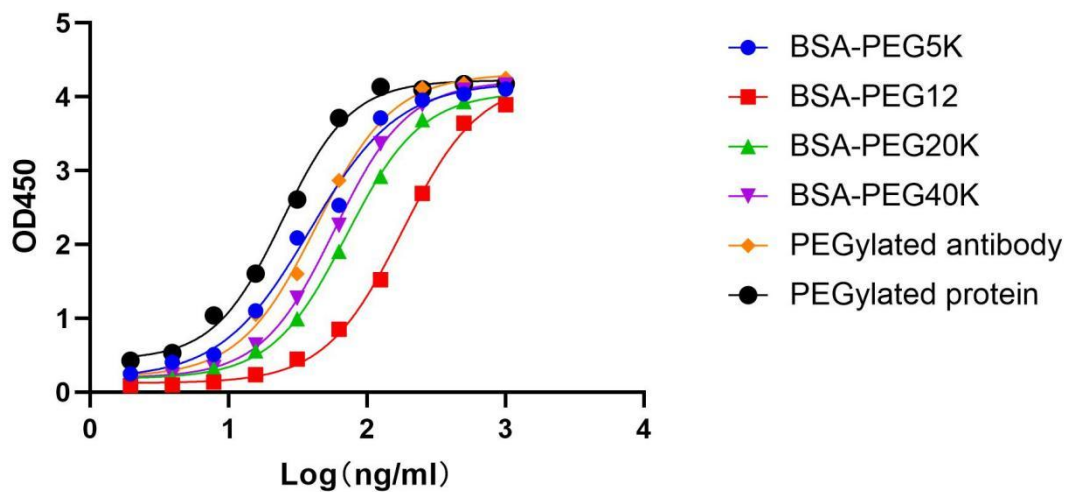


Figure 1. The test results show that the PEG Antibody could detect PEG with different molecular weights. Secondary antibody used at 1/20000. HRP conjugated Streptavidin (Cat.DTA0297).

感谢您选择德泰生物，我们竭诚为您服务！

For Research Use Only!